


  
 Leisurecom Homes Concept

copyright  
 Leisurecom Homes  
 215 Hannon Road,  
 Hautapu  
 07-8235951 \*  
 info@leisurecom.co.nz

REVISION TABLE		
DATE	REVISED BY	DESCRIPTION

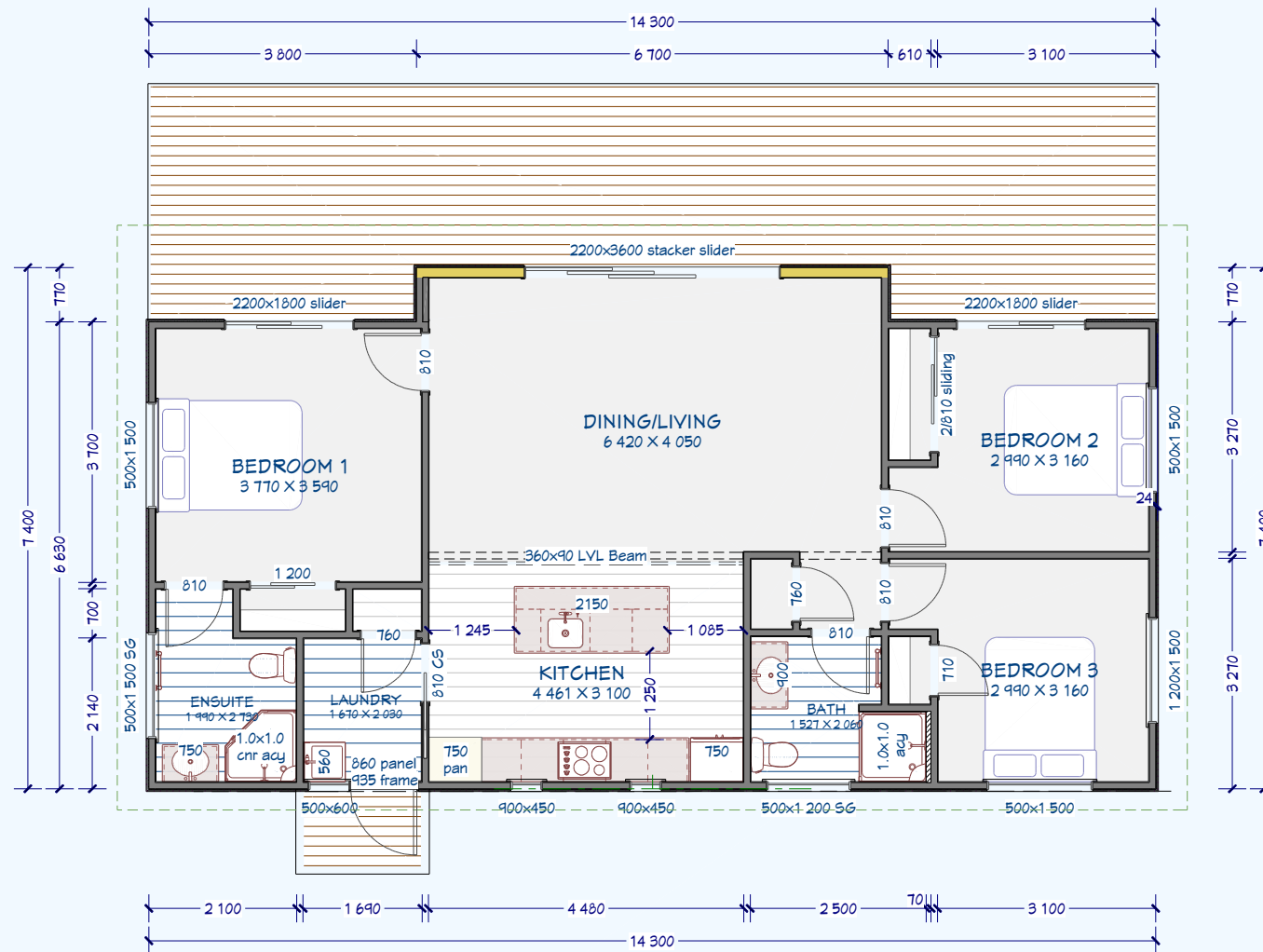
# SNOWMASS - 100 Base

floor area = 100.00m<sup>2</sup> + decks

(decks/steps/carports/garages are indicative only, concept based on flat site and does not take into consideration foundation works - concept at this stage is ex-factory only)

Roofing - Coloursteel Metalcraft MC770 ENDURA  
 Cladding - Triclad lapped weatherboards on cavity, ecoply underskin  
 Joinery - Double glazed LowE - PC aluminium  
 Interior - Gib board system, sloping ceilings  
 Insulation to new code requirements  
 Infinity gas hot water

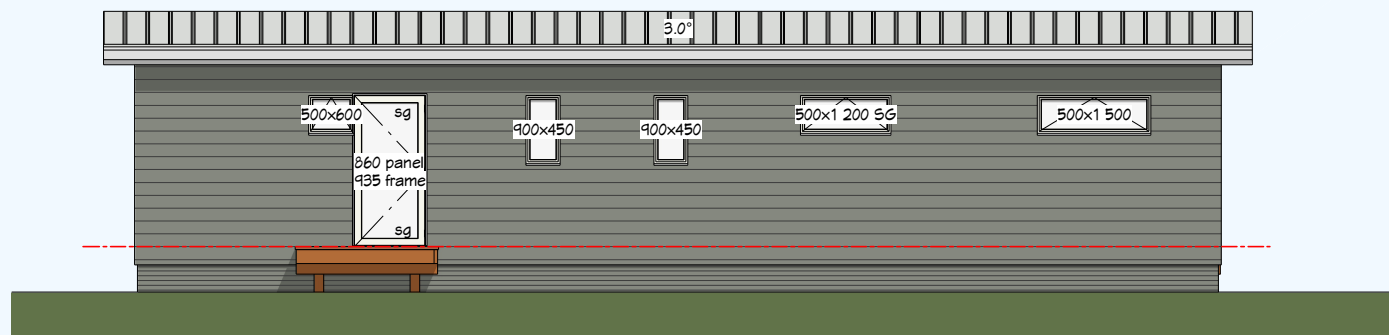
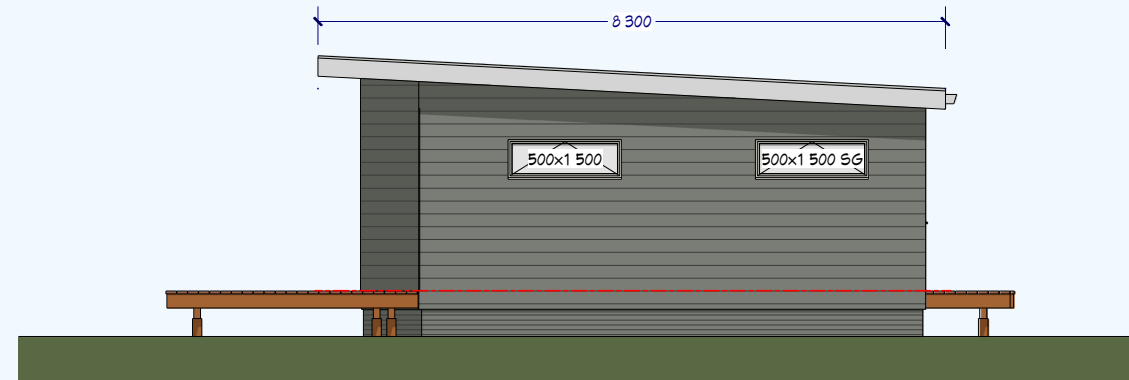
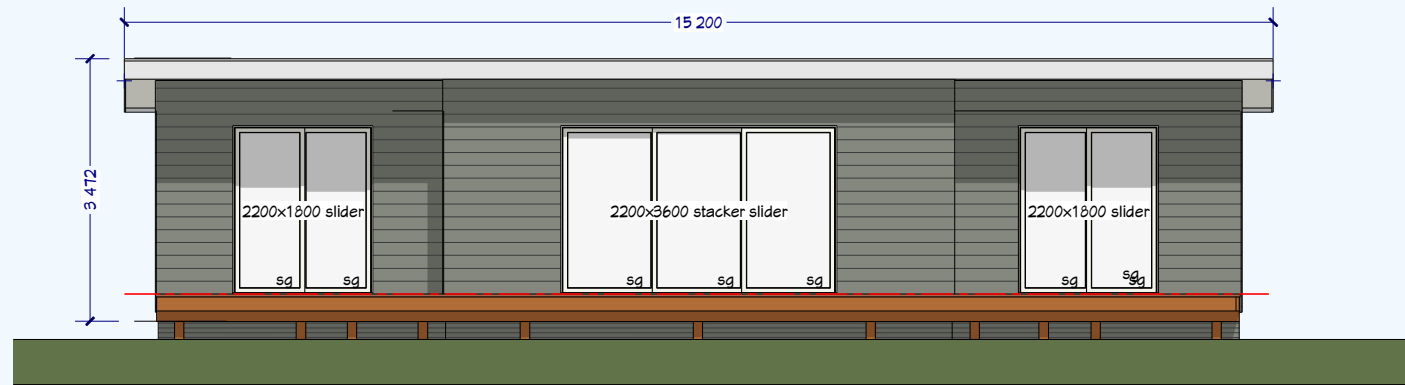
Coastal Zone No  
 EQ Zone - 1  
 WZ -Very High  
 Climate Zone 2



copyright  
 Leisurecom Homes  
 215 Hannon Road,  
 Hautapu  
 07-8235951 \*  
 info@leisurecom.co.nz

REVISION TABLE		
DATE	REVISED BY	DESCRIPTION

# SNOWMASS - 100 Base



**Leisurecom** — HOMES — **concept**

copyright  
Leisurecom Homes  
215 Hannon Road,  
Hautapu  
07-8235951 \*  
info@leisurecom.co.nz

REVISION TABLE		
DATE	REVISED BY	DESCRIPTION